

I. NAME & ADDRESS OF THE INSTITUTION:

TIRUPATI COLLEGE OF PHARMACY,
NEAR GOVT. K.T. COLLEGE,
RATIA - SARDULGARH ROAD
RATIA (FATEHABAD) 125051 HARYANA
Phone: 092155-44124, 099966-69019
Email tirupatiedu@rediffmail.com

II. NAME & ADDRESS OF THE CHAIRMAN/PRINCIPAL:

Sh. PARVEEN GOYAL,
160 - NEW GRAIN MARKET,
RATIA (FATEHABAD) 125051 HARYANA
Phone: 092155-44124, 099966-69019
Email parveenlscp@yahoo.com

III. NAME OF THE AFFILIATING BOARD:

State Board of Technical Education, Haryana (Panchkula)

IV. GOVERNANCE

a) Members of the Board and their brief background

- 1. Sh. Parveen Goyal, M. Pharm., D.C.A., (Ph. D.)
Chairman,**
Ex-President, Association of Pharmaceutical Teachers of India (Haryana Branch), worked as lecturer in Department of Pharmaceutical Sciences, Guru Jambheshwar University, Hisar and Lord Shiva College of Pharmacy, Sirsa. Assistant Manufacturing Chemist and Analytical Chemist in Different Pharmaceutical Industries and actively participates in many other educational activities.
- 2. Sh. Sourabh Goyal, M. Com., B.Ed. M. A. Edu.,
Vice Chairman,**
Participates in various programmes as chairperson and mainly involved in social activities and member of advisory board of various institutions. He involved actively in improvement programmes launched by the society for the welfare of the mankind.
- 3. Ms. Kumud Bansal, M. Pharm., D.C.A.
Secretary,**
Worked as lecturer Lord Shiva College of Pharmacy, Sirsa and member of advisory board of various institutions and also member of other social organizations for welfare of the society
- 4. Sh Mohan Lal Goyal, Treasurer, Renowned Businessman.**
- 5. Ms. Darshana Devi, Executive Member, Social worker.**
- 6. Ms. Mamta Garg, Executive Member, Educationist.**
- 7. Ms. Sarita, Member, M.Sc., M. Phil., M.C.A., Educationist**

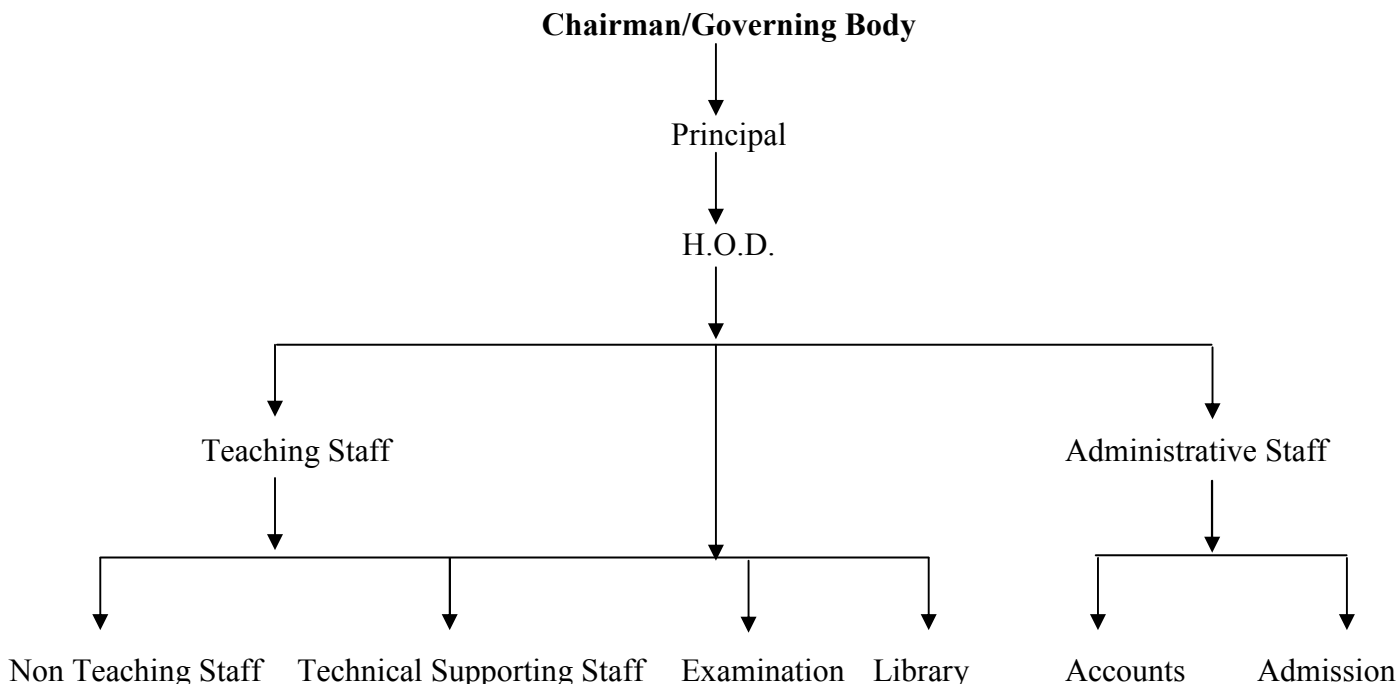
b) Members of Academic Advisory Body

1. Prof. D.N. Mishra M. Pharm. Ph.D.
2. Dr. Vivek Gupta M. Pharm. Ph.D.
3. Ms. Monika Gupta M. Pharm. (Ph.D.)
4. Adv. Raj Kumar Garg. M.A.L.L.M.

c) Frequency of the Board Meetings and Academic Advisory Body

Such meetings are organized twice a year regularly or whenever the need arises for a special problem/work.

d) Organizational chart and processes:



e) Nature and Extent of involvement of faculty and students in academic affairs/ improvements

The Principal Staff of college actively participates in various activities for the overall development of the students. Whenever time permits, staff and students are allowed to join various AICTE sponsored refresher courses organized by different departments of various universities of India. The Staff has been supported by the Tirupati College of Pharmacy, Ratia on the behalf of Tirupati Educational Society (R) Ratia for Higher Studies. Currently Principal had been sponsored for Ph.D. Programme at GJU, Hisar and two of the staff members had been sponsored for M. Pharma in Kurukshetra University, Kurukshetra and M. M. Mulana University, Mulana (HARYANA).

f) Mechanism/Norms & Procedure for democratic/good Governance

Fortnightly meetings of teaching and non-teaching staff are organized for the welfare of students and to solve any other problem arises in the day-to-day activity of the college. The institute has well established organization to look in to all the technical and academic affairs. Students are free to convey their problems to the concerned authorities individually or through their respective representatives. Students are independent to celebrate the various functions concerned to them at the college stage, without direct involvement of the college authorities.

g) Student Feedback on Institutional Governance/faculty performance

The authorities are aware of the current academic status of faculty and institutional governance through a well-set system. This evaluation has been very rewarding and helps a lot in curbing various situations. This evaluation has brought good results in annual results as well as discipline. Our institutional governance has been reflected in the last year result of the institute.

h) Grievance mechanism for faculty, staff and students

Grievance-cum-discipline committee solves all the matters related in this regard. The committee believes in solving such problems as per norms and without hurting any one in particular.

V) PROGRAMMES:

a) Name of the Programmes approved by the AICTE

Diploma in Pharmacy
and
Diploma in Engineering and Technology

b) Name of the Programmes accredited by the AICTE

None

c) For each Programme the following details are to be given:

Name: Diploma in Pharmacy
Number of seats: 60
Duration: 2 years

Name: Diploma Engineering and Technology
Number of seats: 180 (60 each in Mechanical Engineering,
Civil Engineering and
Electronics and Communication Engineering)
Duration: 3 years

Fee: 25,200/- including 1500/- refundable security
Cut off mark/rank for admission during the last three years: AS per Norms of DTE, Haryana &
HSCS Panchkula

Placement Facilities: under consideration and will be developed before the first batch to clear their diploma

Campus placement in last three years with minimum salary, maximum salary and average salary: (New Institution)

d) Name and duration of programme(s) having affiliation/collaboration with Foreign University(s) /Institution(s) and being run in the same Campus along with status of their AICTE approval. If there is foreign collaboration, give the following details: Not Applicable

e) Whether the Collaborative Programme is approved by AICTE? If not whether the Domestic/Foreign Institution has applied to AICTE for approval as required under notification no. 37-3/Legal/2005 dated 16th May 2005. Not Applicable

VI. FACULTY: (Branch wise list faculty members)

Diploma in Engineering and Technology

Permanent Faculty: 18 (01 Principal, 01 Reader, 10 Lecturer and 06 Workshop Instructor)

Visiting Faculty: 00

Diploma in Pharmacy

Permanent Faculty: 07 (01 Reader, 01 Sr. Lecturer, 05 Lecturers)

Visiting Faculty: 00

Permanent Faculty: Student Ratio: 01:19

In addition to the above mentioned faculty the other supporting and administrative staff and non teaching staff had been recruited as per the need of the institution.

VIII. FEE:

S. No.	Types of fees	Annual Charges for D. Pharmacy
1	Tuition Fee	Rs.17500/- Per Annum
2	Development Fee	Rs. 5000/- Per Annum
3	Student fund	Rs. 1200/- Per Annum
4	Caution money college (one time Refundable)	Rs. 1500/- (one time)
5	Caution money-Hostel/Mess (Refundable)	Rs. 1500/- (One time from boarder/Hostellers only)

Student Fund Rs. 1200/- per year as per details given below

Common Room Fee	Rs. 50/-
Medical Examination & Health Care	Rs. 50/-
Souvenir Fee	Rs. 50/-
Student Welfare Fund	Rs. 200/-
Student Aid Fund	Rs. 150/-
Youth Welfare Fee	Rs. 500/-
Identity Card Fee	Rs. 50/-
Sports Fee	Rs. 150/-
Total	Rs. 1200/-

a) Time schedule for payment of fee for the entire programme.

As per Norms of DTE, Haryana/State Govt.

b) No. of Fee waivers granted with amount and name of students.

As per Norms of DTE, Haryana/State Govt.

c) Number of scholarship offered by the institute, duration and amount

Under Consideration

d) Criteria for fee waivers/scholarship.

As per Norms of DTE, Haryana/State Govt.

e) Estimated cost of boarding and lodging in hostels.

2800/- per month

IX. ADMISSION

a) Number of seats sanctioned with the year of approval.

Diploma in Pharmacy

No. of seats 60

Year of approval 2006-07 onwards

Diploma in Engineering and Technology

No. of seats 180

Year of approval 2008-09 onwards

b) Number of students admitted under various categories each year in the last three years.

2007-08: 060

2008-09: 204

2009-10: 240

c) Number of applications received during last two years for admission under Management Quota and number admitted. There was no Management quota.

X. ADMISSION PROCEDURE:

a) Mention the admission test being followed, name and address of the test agency and its URL (website).

The admissions in Diploma in Pharmacy & Diploma in Engineering and Technology., The Entrance Tests/Merit List as conducted/directed by Haryana State Counseling Society, Haryana on behalf of Haryana Govt./State Board of Technical Education, Haryana/Department of Technical Education., Panchkula (Haryana) and its URL is <http://www.hscs.org>, <http://www.tehadmissions.gov.in>

b) Number of seats allotted to different test qualified candidates separately [AIEEE/CET (State conducted test/University tests)/Association conducted test]

As Per As per Norms of Haryana State Counseling Society, Panchkula/DTE, Haryana/State Govt

c) Calendar for admission against management/vacant seats:

There was no management quota for the academic session 2008-09

d) Starting of the Academic session.

11st August 2009 for Diploma in Engineering and 18th Aug' 2009 for Diploma in Pharmacy course

e) The policy of refund of the fee, in case of withdrawal, should be clearly notified.

As Per As per Norms of Haryana State Counseling Society, Panchkula/DTE, Haryana/State Govt

XI. CRITERIA AND WEIGHTAGES FOR ADMISSION

a) Describe each criteria with its respective weightage i.e. admission test, marks in qualifying examination etc.

For Diploma in Pharmacy and Diploma in Engineering and Technology the admission was done on the basis of DET/Marks in the qualifying examination and the admissions are made by the Haryana State Counseling Society, Panchkula or Institution at their own level as per the Norms of Department of Technical Education, Haryana (Panchkula)/Haryana Govt./AICTE and PCI.

b) Mention the minimum level of acceptance, if any.

For getting admission in Diploma in Pharmacy candidate must have passed 10+2 (Medical or Non-Medical) with physics and chemistry as compulsory subjects and mathematics or biology as optional subject or must fulfill the minimum qualification prescribed by the AICTE/PCI/ Haryana Govt./ Department of Technical education, Haryana.

For getting admission in Diploma in Engineering the candidate must have passed Metric with compulsory subjects as per the Norms of AICTE/Haryana Govt./Department of Technical Education, Haryana/HSCS, Panchkula.

c) Mention the cut-off levels of percentage & percentile scores of the candidates in the admission test for the last three years.

As already mentioned above

d) Display marks scored in Test etc. and in aggregate for all candidates who were admitted.

Admissions are made centrally by the Haryana State Counseling Society, Panchkula on the behalf of Department of Technical Education, Haryana/ Haryana Govt.

Item No I - XI must be given in information brochure and must be hosted as fixed content in the website of the Institution. The Website must be dynamically updated with regard to XII–XV.

XII. APPLICATION FORM: There was no management quota in Diploma in Pharmacy and Diploma in Engineering and Technology course for academic session 2009-10

XIII. LIST OF APPLICANTS: Not Applicable

XIV. RESULTS OF ADMISSION UNDER MANAGEMENT SEATS/VACANT SEATS: Not Applicable

XV. INFORMATION ON INFRASTRUCTURE AND OTHER RESOURCES AVAILABLE:

a) LIBRARY

Number of Library books/Titles/Journals available:

Total No. of Titles:	611
Total No. of Books :	5624
Total No. of Journals:	08
List of online National/International Journals subscribed.	Under Process
E-Library facilities:	Under Process

b) LABORATORIES:

S. No.	Name of the Course	Name of the laboratory/ workshop	Major equipment
1.	D. Pharmacy	Pharmaceutics Lab (Excluding Store)	Autoclave, Ointment Filling & Sealing Machine, Ampoule Washing, Filling & Sealing Machine, Ball Mill, Friability Tester, Percolators, Digital Balance, Disintegrator, Dissolution Apparatus, Distillation Unit, Incubator, Aseptic Cabinet etc.
		Pharmachemistry Lab (Excluding Store)	Refrctometer, Hot Air Oven, Water bath, Hot Plate, PH Meter, Colorimeter, Atomic Model Set etc.
		Pharmacognosy Lab (Excluding Store)	Soxhlet Extractor, Microscope, HAO, Tray Dryer, Water Bath, Percolators, OHP etc.
		Pharmacology Lab (Excluding Store)	Electro convalsometer, Organ Bath, BP Apparatus, Histamine Chamber, Microscopes, Charts, Crude Drugs, Skeleton System, Refrigerator, Centrifuge.
		Pharmacy Practice Lab (Excluding Store)	Autoclave, Ball mill, Friability tester, Percolators, Disintegrator, Dissolution Apparatus etc
2.	Diploma in Engineering and Technology	Applied Physics Lab	Digital Multimeter, Parallel Force Apparatus, Polygon Law of Force, Inclined Plane, Worn & Worn Wheel, Cathod Ray Oscilloscope, Travelling Microscope, Sonometer, Tuning Folk, Screw Gauge, Spherometer, Vernier Calipers, Fortin's Barometer, Red Wood Viscometer, Transistor Apparatus etc
		Applied Chemistry Lab	PH Meter, Periodic Table Chart, Dessicator, Digital Electronic Balance, Analytical Balance and Weight Box, Charts Polygram, Clamp Stand with Fischer Clamp, Petri Dish, Test Tube etc
		Communication Skill Lab.	Master console and student unit with seating capacity of 35 students including lab instructor along with necessary accessories such as 35 headphones, recorder etc. and cassettes for imparting instructions to the students, Over head Projector, Slide Projector, OHP Screen etc
		Construction Material Lab	Compressive testing machine, Platform weighing machine, Sleeve brass frame, Vicat's apparatus with brass, Lechattlier soundness apparatus, Concrete cube mould, Hand gloves, Sand pouring cylinder and tray, Dessicator, Pyknometer bottle, Sieves, Thickness & length gauge, Density basket, Proctor mould with rammer, Dibler/scrapper, Cone cutter hammer, Slump cone with damping rod, Post hole agur, Cone penetrometer for soil
		Surveying Lab	Dumpy Level, Theodolite, Prismatic compass, Plane table, Ranging rod, Chain, Tape, Metalarm and wooden cross-staff, Indian optical square, U Frame, Spirit level, Plumb bob, Trough compass, Alidade long, Plaine alidade, Cylon ghat tracer, Abney level, Stradia and stud rod, Off set rod, Pantagraph, Box sextant, Orsat apparatus, Tripod stands, Tangent clinometer etc
		Fluid Mechanics Lab	Bernoulli's Theorem Apparatus, Flow Measurement by Venturimeter, Conducting Orifice Experiments, (Experiments Cc, Cv and Cd), Reynolds Apparatus, Triangular and Rectangular Notch Tank Apparatus, Pipe Fitting Test Apparatus
		General Engineering Lab	Model of two stroke diesel engine, Model of two stroke petrol engine, Model of four stroke diesel engine, Model of four stroke petrol engine, Model of reversing gear, Model of helical gear, Model of cone clutch drive, Model of belt drive
		Electrical Machine Lab	Three phase DC shunt motor, Three phase DC series motor, Three phase transformer, Single phase transformer, Single phase auto transformer and Three phase auto transformer etc.
		Strength of Material Lab	Impact Testing Machine, Rockwell Hardness Tester, Torsion Testing Machine, Spring Testing Machine, Extensometer, Universal Testing Machine
		Thermodynamics Lab	Orsat gas analysis apparatus, Flash point apparatus, Models of Vertical water tube boiler, Lancashire boiler, Impulse water turbine, Leaver safety valve, Spring loaded safety valve, Dead weight safety valve, Blow of cock etc

	Electrical And Electronics Lab	Digital multimeter, Analog multimeter, Cathode ray oscilloscope, Transistor apparatus, Digital function generator, Dual power supply, PN junction & zener diode characteristic apparatus, Kirchoff current/voltage law apparatus, Maximum power transform theorem, Super position theorem, Watt meter multiple element, Voltmeter & Ammeter, Maggar, Half wave/Full wave bridge rectifier, Resistance in series and parallel, Common emitter transistor amplifier, Biasing techniques of transistor apparatus, RC coupled amplifier kit, Push –Pull amplifier kit, Emitter follower kit, Series and shunt clipping & clamping circuit, Op amplifier kit, Voltage regulator, AM modulator kit, FM modulator/demodulator kit, PAM/PPM/PWM trainer kit, Digital trainer kit having different gates, Digital trainer having Mux/De-Mux circuit, Bread board, Distortion factor meter, Desauty bridge, Kelvin bridge, Battens, Fitting clip, Hammer, Combination side cutting plier, Screw drivers, Test pin, Insulating tape, Fitting box wooden, M.C.B., Main switch, Fuses, switches, 3 Pin and power sockets, Cutter plier, Nose plier, Energy meter single phase, Heater body & plate with element, Heating element, Soldering iron & wire & flux, Mica & plastic sheets, Two- and three pin top, One way switch etc.
--	--------------------------------	-----------------------------------------------------------------------------------------------------------------------------------------------------------------------------------------------------------------------------------------------------------------------------------------------------------------------------------------------------------------------------------------------------------------------------------------------------------------------------------------------------------------------------------------------------------------------------------------------------------------------------------------------------------------------------------------------------------------------------------------------------------------------------------------------------------------------------------------------------------------------------------------------------------------------------------------------------------------------------------------------------------------------------------------------------------------------------------------------------------------------------------------------------------------------------------------------------------------------------------------------------------------------------------------------------------------------

c) WORKSHOPS:

S. No.	Name of the laboratory/ Workshop	Major equipment
01.	Carpentry Shop	Hand Hexa frame and Blade, Outside and Inside Spring calliper, Mortise gauge (wooden), Mortise chisels, Firmer chisels, Carpenter bench Vice, Rip Saw, Tennon Saw with handle and Hammer Spring dividers, Pincer, Screw driver, Pliers etc.
02.	Fitting and Plumbing Shops	Hand hexa frame and blade, Round and Square Files Adjustable Surface guage with stand, Vernier Calliper,, Micro meter, Center Punches,, Scriber, Outside and Inside Calliper Drill, Chisels, Hand Reamers, Tap and Die handle etc.
03.	Welding Shop	Arc Welding machine, MIG welding machine, LPG gas cylinder, Oxygen gas cylinder, Carban di-oxide gas cylinder, Electrode Holder, Welding holder and lead, Earth clamps, Chipping hammer, Files, Hammer, Tongs, Bench Grinder/Vice etc.
04.	Forging and Sheet Metal Shop	Swage block, Furnace diesel type, Anvil, Hammers, Punch, Chisels, Scribers, Spring divider, Pliers, Soldering iron, Bench Grinder/ Vice, Standard wire gauge, Center Punch, Straight snip etc
05.	Paint Shop	Paint Brush, Sand paper, Red oxide Primer, PMR oil, Shieler, Laker, Varnish, Primer, Fevicol, Stainer, Chalk Powder, Sand Paper with Velcro (Metal) etc
06.	Electrical And Electronics shop	Digital multimeter, Analog multimeter, Cathode ray oscilloscope, Transistor apparatus, Digital function generator, Dual power supply, PN junction & zener diode characteristic apparatus, Kirchoff current/voltage law apparatus, Maximum power transform theorem, Super position theorem, Watt meter multiple element, Voltmeter & Ammeter, Maggar, Half wave/Full wave bridge rectifier, Resistance in series and parallel, Common emitter transistor amplifier, Biasing techniques of transistor apparatus, RC coupled amplifier kit, Push –Pull amplifier kit, Emitter follower kit, Series and shunt clipping & clamping circuit, Op amplifier kit, Voltage regulator, AM modulator kit, FM modulator/demodulator kit, PAM/PPM/PWM trainer kit, Digital trainer kit having different gates, Digital trainer having Mux/De-Mux circuit, Bread board, Distortion factor meter, Desauty bridge, Kelvin bridge, Battens, Fitting clip, Hammer, Combination side cutting plier, Screw drivers, Test pin, Insulating tape, Fitting box wooden, M.C.B., Main switch, Fuses, switches, 3 Pin and power sockets, Cutter plier, Nose plier, Energy meter single phase, Heater body & plate with element, Heating element, Soldering iron & wire & flux, Mica & plastic sheets, Two- and three pin top, One way switch etc.
07.	Turning Shop	Lath Machine, Power Saw Machine, Bench Grinder Machine, Dead Center, Revolving Center, V- Block, Bench Vice, Knurling Tool with 4 Bit extra, Surface Gauge, Micro Metter, Vernier Caliper, Screw Pitch Gauge, Dial Test Indicator, Sleeve, Twist Drill, Drill Chuck, Tool Holder & Bits, Boring Tool Holder & Bits, Dog Carrier, Power Saw Blade, Grinder Wheel etc
08.	Drilling Shop	Radial drilling machine, Steel rule, Try square, Tap handle, Reamer Counter boring tool & counter sinking tool, Verniar depth gauge, Inside Clipper & outside clipper, Letter punch, Hammers, Files, Hand hacksaw frame & blade, Bench Wise, Machine Wise and Drills etc

d) COMPUTING FACILITIES:

Number and Configuration of Systems:	50, P-IV
Total number of systems connected by LAN:	50
Total number of systems connected to WAN:	None
Internet bandwidth:	115.2 Kbps/ 100.0 Mbps (Broad Band)
Major software packages available:	Windows XP, Windows 98, Linux, Acrobat Reader, Windows Professional, Tally, Page Maker, Chem. Draw, Chem. Screen, Plot Area, Etc
Special purpose facilities available:	Internet Facilities for Staff and Students

e) BUILDING

i) Available Built up area per student: About 10.521 Sq.M./Student

ii) Total Built up Area for the existing programme(s)

Particulars	Building with RCC Roof (Sq.M)	Building with Sheet Roof (Sq.M)	Total Area Available (Sq.M)	Total Sanctioned Intake (Pharmacy/ Engg. and Technology)	Built up area per student (Sq.M)
Instructional Area (Carpet Area)	1990 Sq. M.	710 Sq. M.	2700 Sq. M.	240	05.625 Sq. M.
Administrative Area (Carpet Area)	0500 Sq. M.	-----	0500 Sq. M.	----	04.896 Sq. M.
Amenities (Carpet Area)	1850 Sq. M.	-----	1850 Sq. M.	----	
Circulation & Others				-----	
Total	4340 Sq. M.	710 Sq. M.	5050 Sq. M.	240	10.521 Sq.M.

iii) Detail of Instructional Area:

Particulars	Number of Rooms	
	Available in the institution	Available in the Institution
Class Rooms	02	090.00 Sq.M.
Class Rooms	07	060.00 Sq.M.
Tutorial Hall	02	047.00 Sq.M.
Drawing Hall (*)	01	173.00 Sq.M.
Computer Centre	01	190.00 Sq.M.
Library	01	220.00 Sq.M.
Machine Room	01	100.00 Sq.M.
Laboratories	05	050.00 Sq.M.
Laboratories	03	070.00 Sq.M.
Workshops	06	119.00 Sq.M.

f) OTHER FACILITIES AVAILABLE:

Games and Sports Facilities: Cricket, Volleyball, Hockey, Basket ball, Indoor games etc.

Extra Curriculum Activities: Cultural Activities, Institute is performing NSS activities.

Examination Facility, Number of rooms and capacity of each:

Classrooms: 07 (Size: 600.00 Sq. Ft. Each)

Classrooms: 02 (Size: 900.00 Sq. Ft. Each)

Drawing Hall: 01 (Size: 1850.00 Sq. Ft.)

Number of Tutorial Rooms and size of each: 02 (Size: 500.00 Sq. Ft.)

Teaching Learning process: Along with the state of art facilities in library, teaching staff is also sent to attend various AICTE/UGC sponsored programmes from time to time. Extension lecturers by experts are also delivered on selected topics for updating teachers and students both.

Curricula and syllabi for each of the programmes as approved by the Board: The curricula and syllabi had been implemented in the institution as approved by Department of Technical Education, Haryana/State Govt./State Board of Technical Education, Panchkula and PCI.

Academic Calendar of the Board: State Board of Technical Education, Panchkula and PCI and had been implemented in the institution.

Academic Time Table: Attached

Teaching Load of each Faculty: As per Norms of Department of Technical Education, Haryana/State Govt./State Board of Technical Education, Panchkula and PCI.

Internal Continuous Evaluation System in place: Regular system of conducting Internal (Sessional) exams is followed. The sessional examinations are notified well in advance through the college academic calendar both for theory and practical exams. Weightage for Internal assessment is as per norms of Department of Technical Education, Haryana/State Govt./State Board of Technical Education, Panchkula and PCI.

Students' assessment of Faculty, System in place: Such an assessment is regularly conducted and is very helpful in providing proper education to the students.

NOTE: SUPPRESSION AND/OR MISREPRESENTATION OF INFORMATION WOULD ATTRACT APPROPRIATE PENAL ACTION.

PROFILE OF DIRECTOR/PRINCIPAL WITH QUALIFICATIONS, TOTAL EXPERIENCE, AGE AND DURATION OF EMPLOYMENT AT THE INSTITUTE CONCERNED:

For each Faculty give a page covering

1. Name: **PARVEEN GOYAL**
2. Date of Birth: **15/12/1975**
3. Educational Qualification: **M. Pharm., D.C.A., (Ph.D.)**



4. Work Experience: Teaching/Research/Industry/Others:
**About Three and half years as a Principal in Pharmacy Institute,
About five years as lecturer in Pharmacy Department,
Two Years in Pharmaceutical Industry as Assistant Manufacturing Chemist and
Analytical Chemist.
About three years of research.**
5. Area of Specializations: **PHARMACEUTICS**
6. Subjects teaching at Diploma/Under Graduate Level/Post Graduate Level:
**Dosage Form Design, Pharmaceutical Technology, Physical Pharmacy,
General Pharmacy, Pharmaceutics – I & II and Pharmaceutical Engineering etc.**
7. Research guidance:
No. of papers published in
National Journals: **Two**
International Journals **Three**
Conferences **Thirteen**
8. Projects Carried out: **FORMULATION AND EVALUATION OF
ENCAPSULATED ANTI TUBERCULAR
DRUGS IN DIFFERENT DRUG CARRIERS.**
9. Research Publications: **SEVEN**